

# Western Sydney Aerotropolis Precinct Plans

*released September 2024*

Figure 3: Land Use and Structure Plan

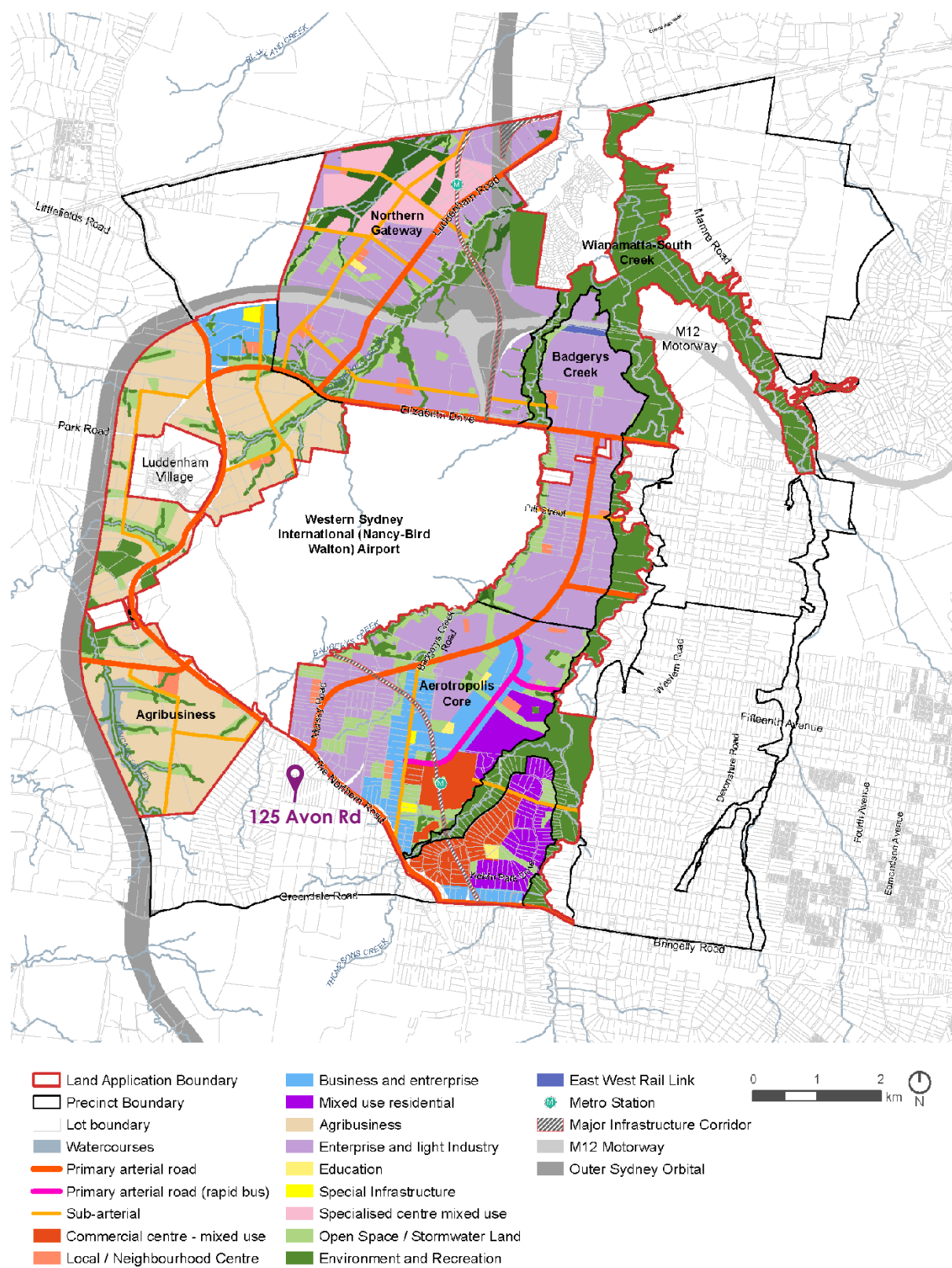


Figure 6: Total Water Cycle Management

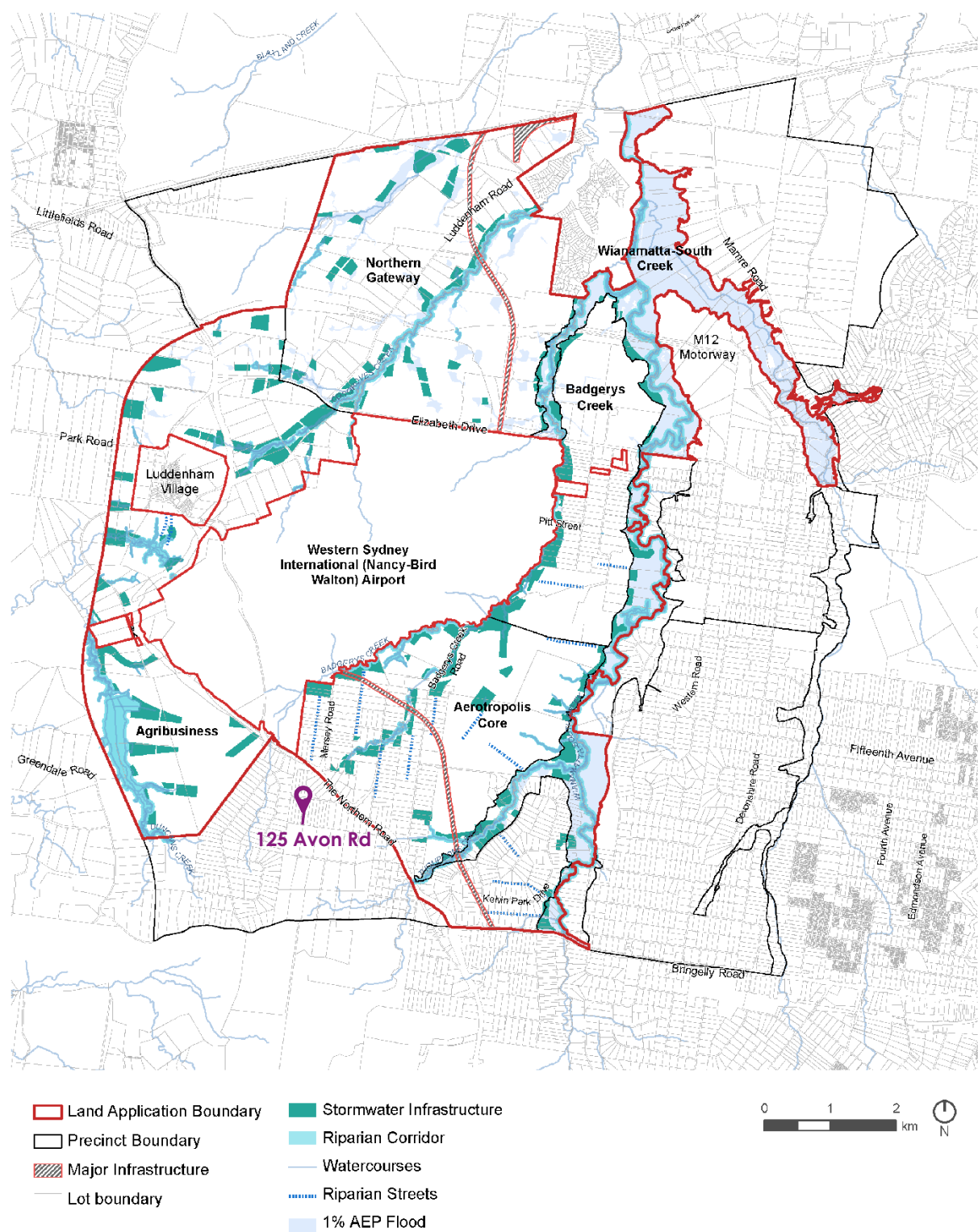


Figure 7: Protected Existing Native Vegetation and Protected areas under the Cumberland Plain Conservation Plan

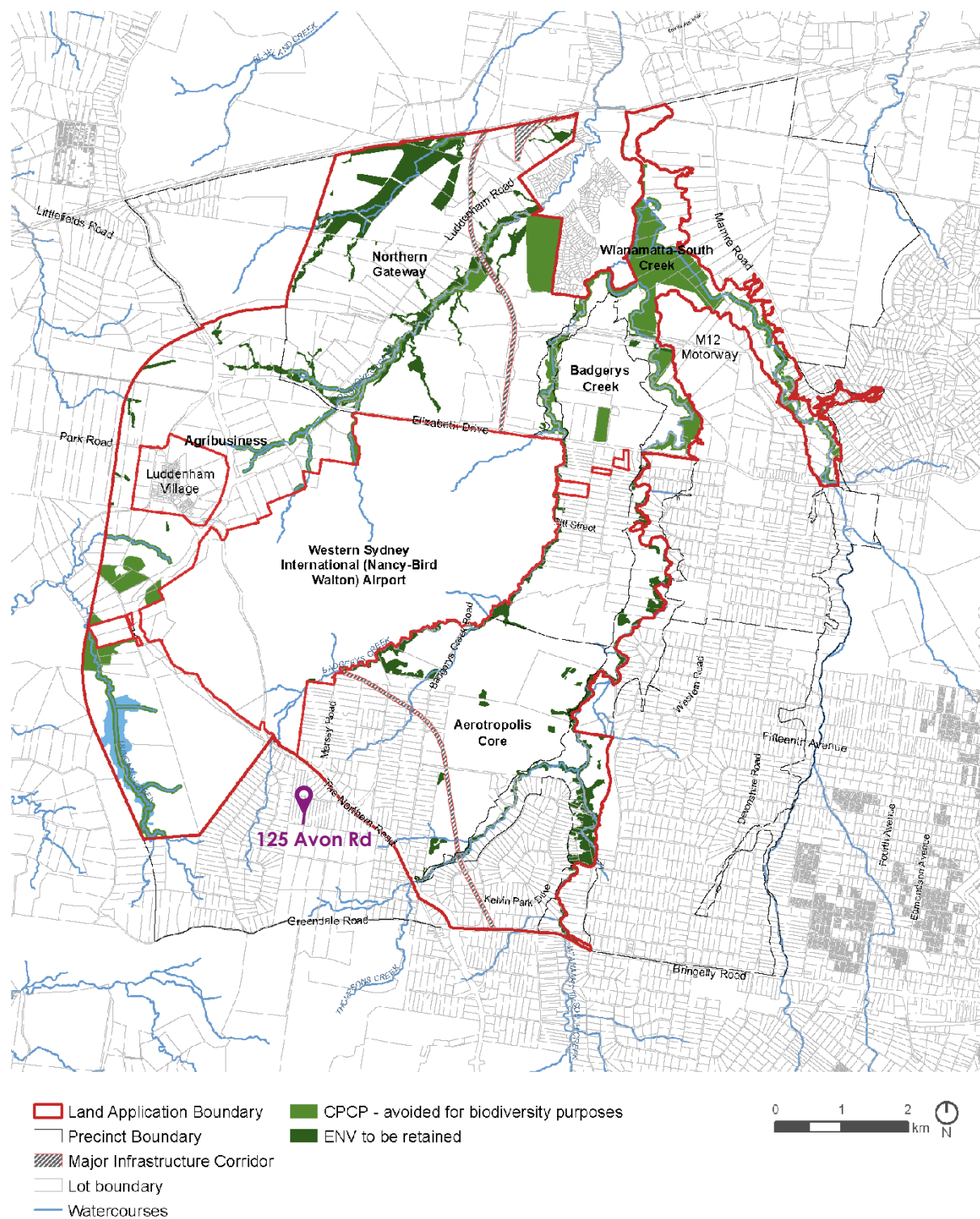




Figure 8: Transport Network

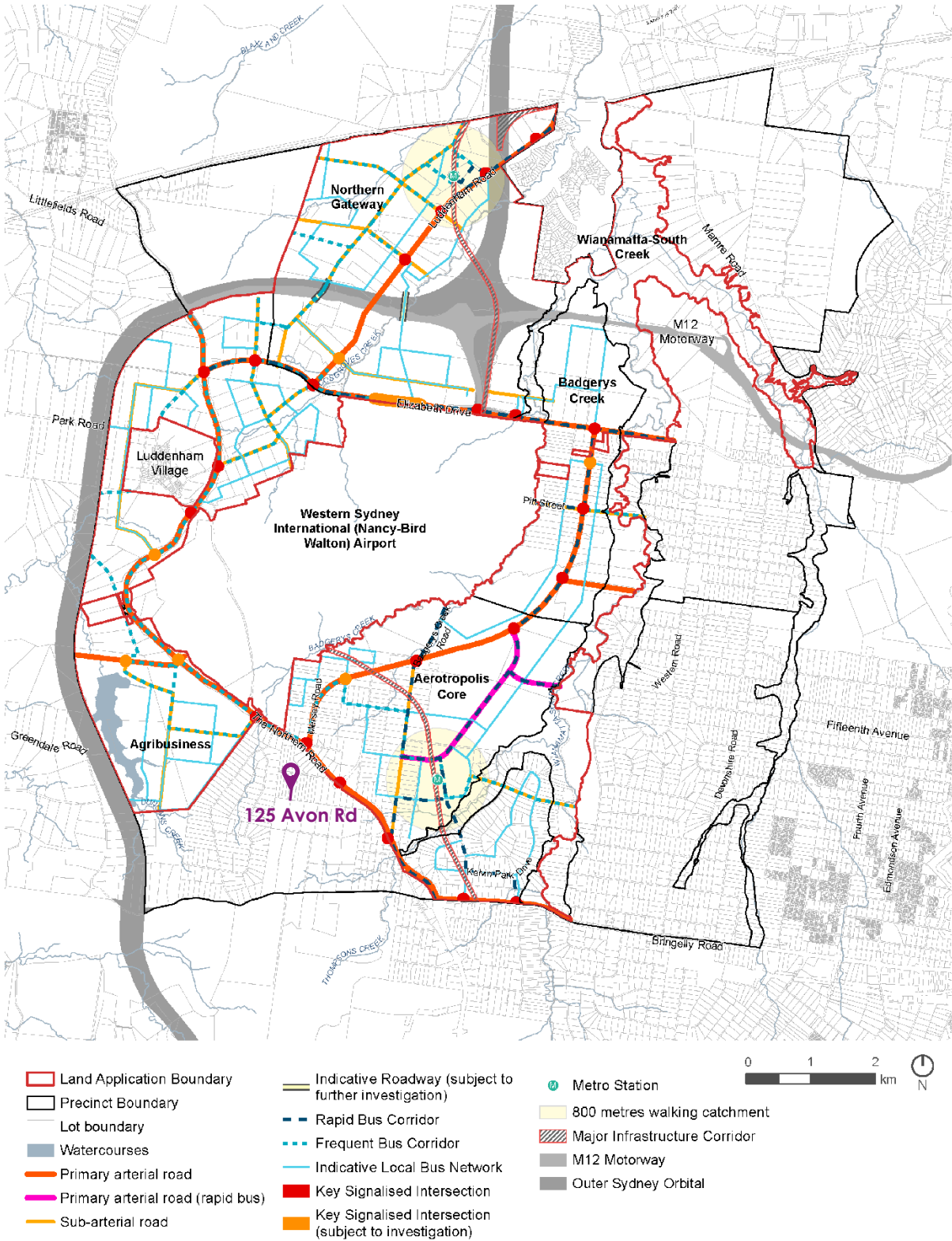
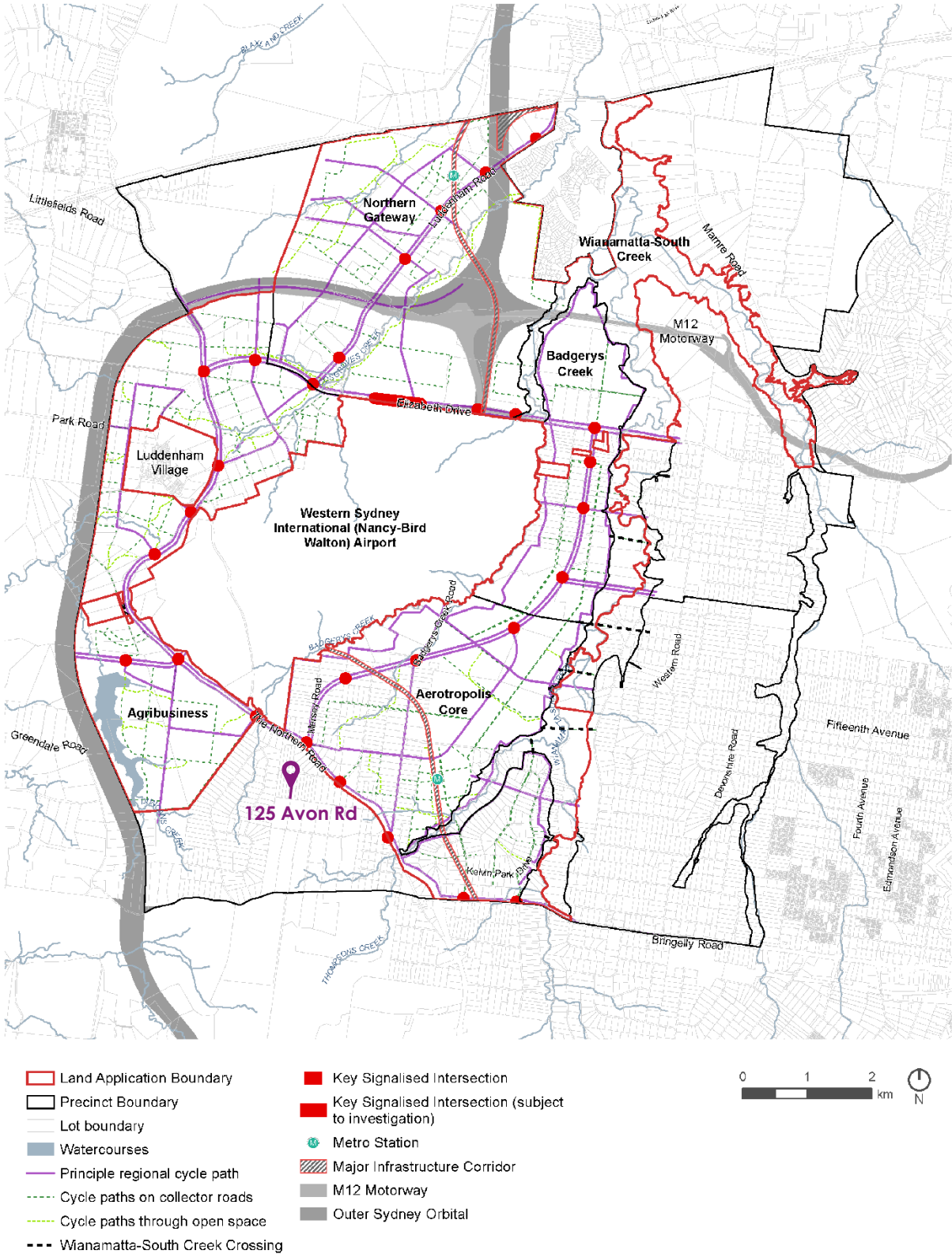


Figure 9: Active Transport Network



The map illustrates the Western Sydney International (Nancy-Bird Walton) Airport and its surrounding urban and natural environment. The airport is centrally located, with the Aerotropolis Core to its south and Luddenham Village to its west. The M12 Motorway runs along the eastern edge of the airport. Key roads include Elizabeth Drive, Fitt Street, and the M12 Motorway. The map also shows the location of 125 Avon Rd, marked with a purple pin. The map highlights the location of 125 Avon Rd, marked with a purple pin. The map also shows the location of 125 Avon Rd, marked with a purple pin.





Figure 11: Centres Hierarchy

